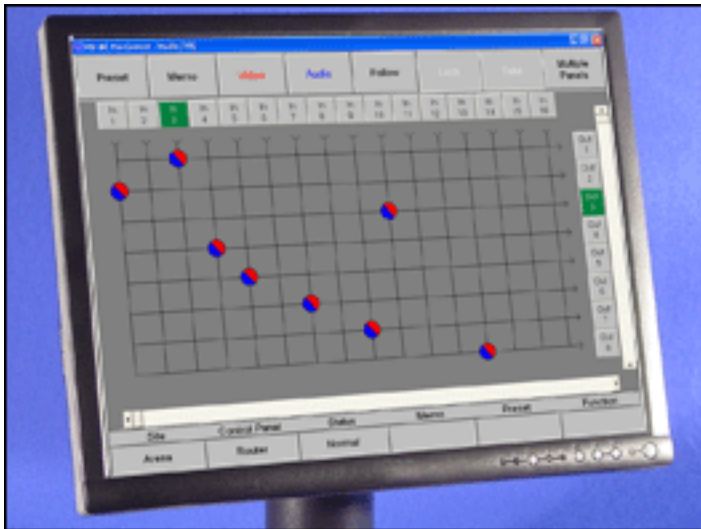


# TL-603

## MC Pro Tool for MC5 Remote Control of Leitch Routers



Execute	Define	Name	Text	Protection	Remove	Second Screen	Cancel
Preset: 02 Press Room	VTR Pool	Preset 10 (Undefined)	Preset 20 (Undefined)	Preset 30 (Undefined)	Preset 40 (Undefined)		
Protection: No	Booth Camera	Preset 11 (Undefined)	Preset 21 (Undefined)	Preset 31 (Undefined)	Preset 41 (Undefined)		
	Press Room	Preset 12 (Undefined)	Preset 22 (Undefined)	Preset 32 (Undefined)	Preset 42 (Undefined)		
	West Balcony	Preset 13 (Undefined)	Preset 23 (Undefined)	Preset 33 (Undefined)	Preset 43 (Undefined)		
	Bars and Tone	Preset 14 (Undefined)	Preset 24 (Undefined)	Preset 34 (Undefined)	Preset 44 (Undefined)		
	Preset 05 (Undefined)	Preset 15 (Undefined)	Preset 25 (Undefined)	Preset 35 (Undefined)	Preset 45 (Undefined)		
	Preset 06 (Undefined)	Preset 16 (Undefined)	Preset 26 (Undefined)	Preset 36 (Undefined)	Preset 46 (Undefined)		
	Preset 07 (Undefined)	Preset 17 (Undefined)	Preset 27 (Undefined)	Preset 37 (Undefined)	Preset 47 (Undefined)		
	Preset 08 (Undefined)	Preset 18 (Undefined)	Preset 28 (Undefined)	Preset 38 (Undefined)	Preset 48 (Undefined)		
	Preset 09 (Undefined)	Preset 19 (Undefined)	Preset 29 (Undefined)	Preset 39 (Undefined)	Preset 49 (Undefined)		

### Features

#### User Friendly Operation

- Provides complete control and monitoring of Leitch routers via serial interface
- Straight forward cross point matrix is easy to understand and operate

#### Advanced Functions

- Simplify and enhance daily operations
- Video and audio sources can be switched together or independently
- **Preset** allows up to 100 preset settings per router to be programmed into the MC5 master unit for instant recall

#### Administrator Module

- All operational parameters of the router remote control are user defined through the Administrator
- Enables the user to custom tailor the MC5 equipment control panel

### User Friendly Operation

MC Pro Tool TL-603 provides the command and control functions for the MC5 remote control of the Leitch audio-video routers via serial interface (Leitch Terminal Protocol). It's user friendly control panel features a straight forward cross point matrix, providing intuitively easy operation and a short learning curve. Operation of each control panel is through a touchscreen or mouse interface and there are no keyboard commands to learn.

### Advanced Functions

The MC5's advanced functions simplify and enhance daily operations. The video and audio sources can be switched together or independently. In addition, the **Preset** function allows up to 100 presets per switcher to be programmed into the MC5 master unit for instant recall.

### Versatile Configurations

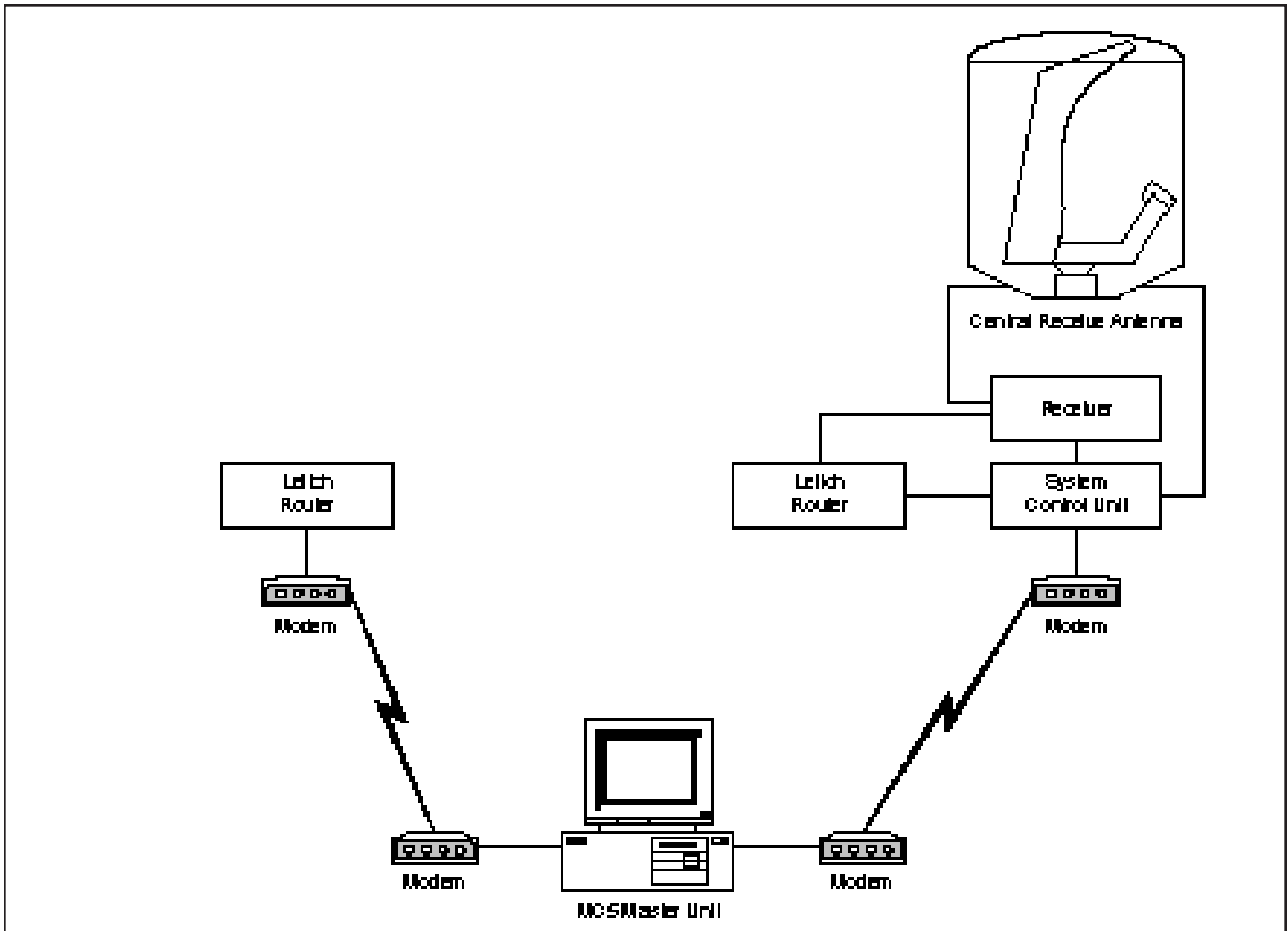
The Leitch router can be remotely controlled through a direct connection with the MC5 master unit in the same equipment rack or via modems to a remote location. Alternatively, it can be remotely controlled via an MC5 slave unit or system control unit, which can act as a communications hub with the MC5 master unit for the control of multiple devices at a remote site.

### Administrator Module

A highly versatile Administrator module is included, enabling the user to custom tailor the system to meet the operational requirements of each application. Through the Administrator, the user can define all the parameters of the system, including the graphic display and operation of the MC5 equipment control panel as well as the interface to the switcher.



## TL-603 MC Pro Tool for MC5 Remote Control of Leitch Routers



### Versatile Configurations

The Leitch router can be remotely controlled through a direct connection with the MC5 master unit at the same site or via modems to a remote location. Alternatively, it can be remotely controlled via an NSI system control unit, which can act as a communications hub with the MC5 master unit for the control of multiple devices at the remote site.

### User Defined Control

The MC5 features an advanced Administrator module that enables the user to custom tailor the system to meet the operational requirements of each application. Through the Administrator, the user can define all of the parameters of the switcher remote control, including the graphics of the MC5 equipment control panel as well as the interface to the switcher.

